

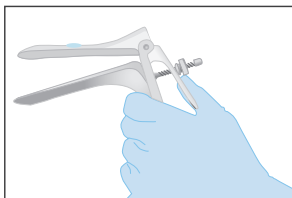
# Speculum and lubricant guidance for specimen collection and transfer procedure

## BD MAX™ UVE Specimen Collection Kit

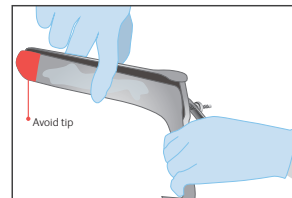
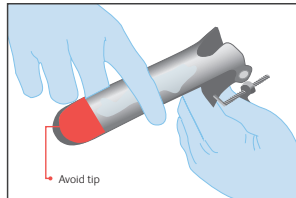
### Guidance if speculum and/or lubricant must be used.

If a speculum must be inserted prior to collecting the vaginal swab for BD MAX™ Vaginal Panel or the endocervical swab for BD MAX™ CT/GC/TV

1. Do **not** collect specimen at the posterior fornix.
2. Lukewarm water may be used to warm and lubricate the speculum.
3. If lubricant must be used, lubricant should be used sparingly (1.8 mm) and applied only to the exterior sides of the speculum blades, avoiding contact with the tip of the speculum.
4. Avoid contact between the swab and the speculum or lubricant.



Apply a 1.8 mm amount of lubricant on the speculum



Apply only to exterior sides of the speculum, avoiding the tip.

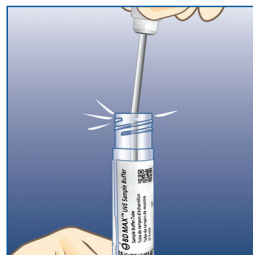
5. a. BD MAX™ Vaginal Panel: Insert the collection swab to contact the vaginal sidewall, 2 inches (5 cm) within the vagina, rotate gently for 10-15 seconds; withdraw the swab without touching the speculum.  
b. BD MAX™ CT/GC/TV: Holding the swab by the white cap, insert the swab into the cervical canal and rotate for 15 to 30 seconds.

### Swab-to-tube transfer procedure (clinician-collected and self-collected)

To transfer the sample



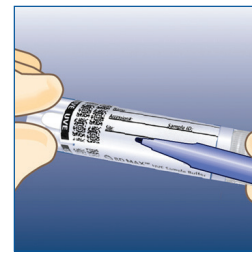
1. Fully insert the swab into the tube so that the tip is at the bottom.



2. Carefully break the shaft at the score mark. Be careful to avoid splashing.



3. Tightly re-cap the tube.



4. Label tube with patient information, date, and time collected. Be careful not to obscure the bar codes on the tube.

BD Life Sciences, Sparks, MD 21152-0999 USA  
800.638.8663

[bd.com](http://bd.com)

©2019 BD. BD, the BD Logo and BD MAX are trademarks of Becton, Dickinson and Company.  
223051 Printed in the USA, March 2019.

