

EFFICIENT

ACCURATE

FLEXIBLE



Helping all people
live healthy lives

BD Viper™ LT System

Your Solution for STI Testing



BD VIPER™ LT SYSTEM

EFFICIENT MOLECULAR STI TESTING FOR LOW AND MID-VOLUME LABORATORIES



Reduces hands-on time

- Automated workflow with minimal hands-on time
- Ready-to-use reagents
- Sample tubes with pierceable caps to avoid manual opening
- LIS connectivity with automated result reporting capability

Minimizes waste and potential for errors

- Unit dose assays and extraction tubes minimize reagent waste
- Automated reagent and consumable checks identify potential errors before a run starts
- Moderately complex rating from CLIA

Improves utilization of laboratory space

- Integrated, self-contained table top system
- Room temperature reagent storage
- Sample to results within a single system



BD VIPER™ LT SYSTEM

ACCURATE RESULTS

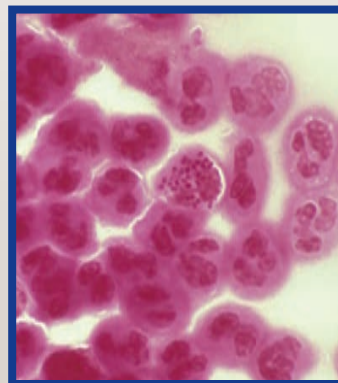
FROM A FULL RANGE OF SAMPLE TYPES

BD ProbeTec™ *Chlamydia trachomatis* (CT) Q^x Amplified DNA Assay

BD ProbeTec™ *Neisseria gonorrhoeae* (GC) Q^x Amplified DNA Assay

- Second generation assays with proven sensitivity and specificity¹
- Clear positive/negative results – no equivocal zone¹
- <1% indeterminate rate

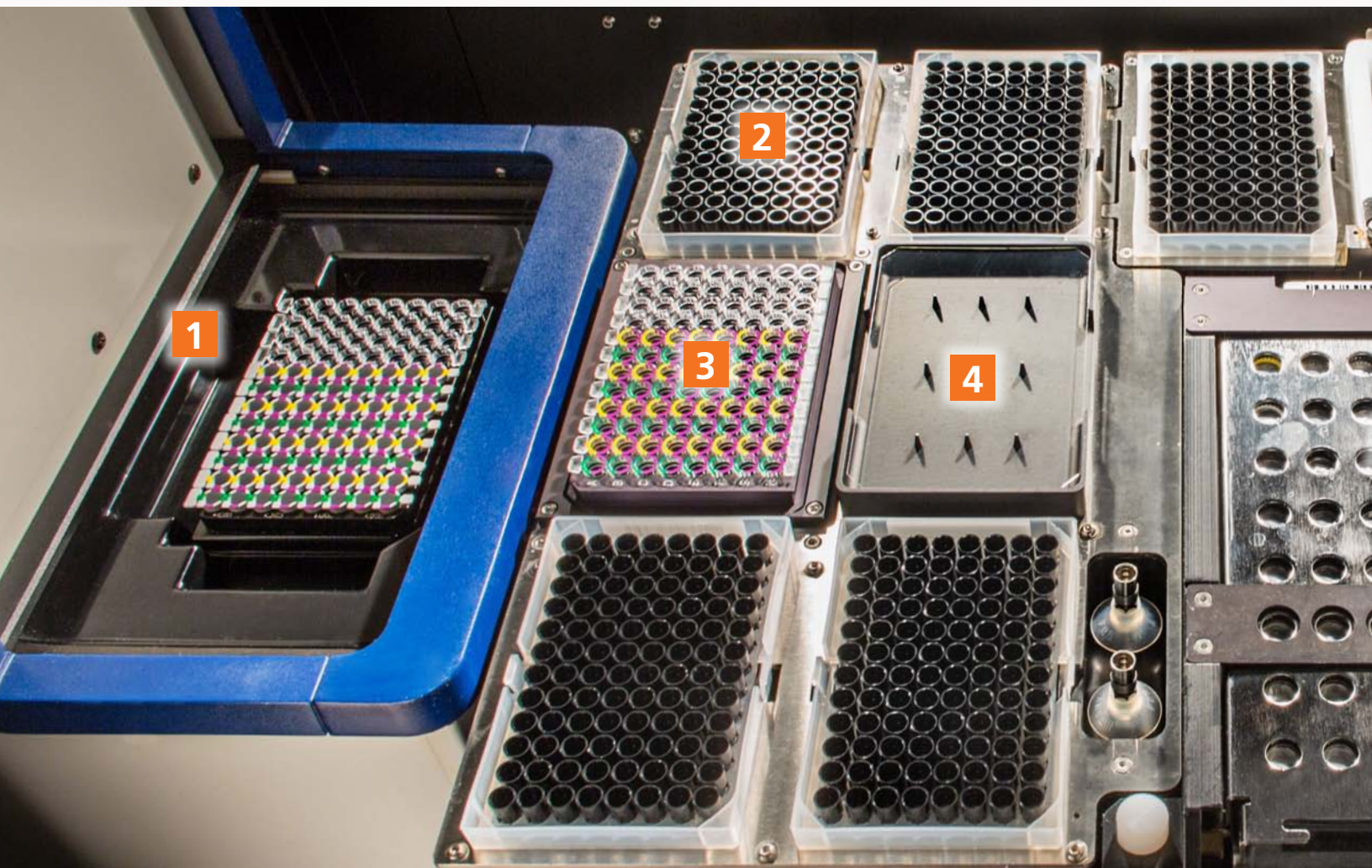
AVAILABLE SAMPLE TYPES	CT, GC, CT/GC (FDA cleared)
Female Endocervical Swabs	✓
Vaginal swabs (self-collected in a clinical setting)	✓
Male Urethral Swabs	✓
Male/Female Urines (UPT or Neat)	✓
Liquid Based Cytology: BD SurePath™ Preservative Fluid	✓
Liquid Based Cytology: Hologic PreservCyt® Solution for use with the ThinPrep Pap® test	✓





THE BD VIPER™ LT PLATFORM

Helps enhance your laboratory's efficiency in molecular testing



- 1. Reader:** Utilizes 4 fluorescent channels with advanced optics and LED light sources for accurate and reliable detection and a thermocycler with 24 control zones to ensure uniform temperature control.
- 2. Pipette tip stations:** Holds all necessary pipette tips, which allow for liquid level sensing.
- 3. SDA priming station:** Priming station for SDA-based assays holds up to 96 unitized priming wells.
- 4. Plate sealer station:** System automatically seals the amplification plate.
- 5. Specimen rack input area:** Holds up to 48 pierceable cap tubes for efficient sample handling.
- 6. Extraction reagent trough:** Holds extraction reagents in a ready-to-use format. Simply place on instrument during setup – a built in barcode scanner records the lot number and expiration date.
- 7. Extractor:** Holds up to 48 single-use BD FOX™ extraction tubes for DNA extraction.



BD VIPER™ LT SYSTEM

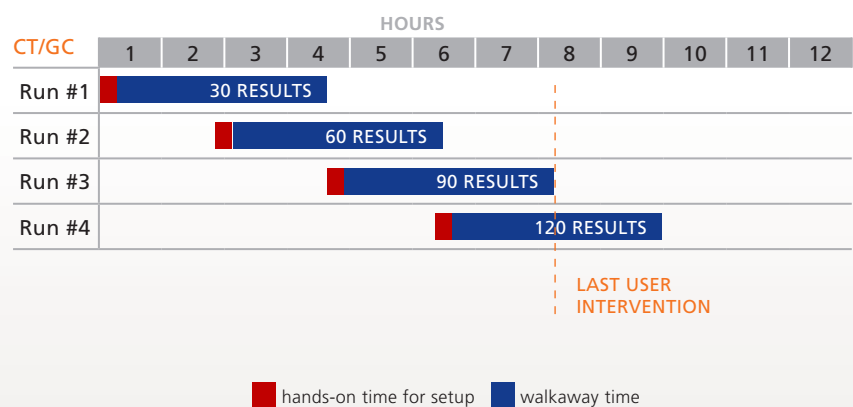
MINIMUM HANDS-ON TIME

THE THROUGHPUT YOU NEED

BD ProbeTec™ CT/GC Amplified DNA Assays

- <15 min. hands-on time for run setup²
- Up to 30 sample results in 3.5 hours
- 120 results per day. Last user intervention at 7.5 hr. in high-throughput mode

Throughput and ratio of hands-on time to walkaway time in high-throughput mode



² "Viper LT High-throughput Workflow Study" Nov 2014. Conducted at BD.

BD VIPER™ LT SYSTEM

INSTRUMENT SPECIFICATIONS



Physical Dimensions

Height	46 in (117 cm)
Width	51 in (130 cm)
Depth	36 in (91 cm)
Weight (instrument, Pre-warm heater, optional Lighted Login Station)	467.8 lb (212.2 kg)
Weight (instrument only)	445.7 lb (202.2 kg)

Electrical Requirements

Input Voltage	100-240 VAC
Input Current	12 Amp
Input Line Frequency	50/60 Hz
Power	≤ 1800 W

Heat – Instrument	1000 Btu/hr when idle; up to 3000 Btu/hr during a run (depending on ambient temperature, relative humidity, line voltage, etc.)
Pre-warm heater	300 Btu/hr when idle; up to 2500 Btu/hr during a pre-warm protocol (depending on ambient temperature, relative humidity, line voltage, etc.)

Environmental Requirements

Operating Conditions

Temperature	18-33 °C (64.4 - 91.4 °F)
Humidity	20% – 85% RH @ 18 - 33 °C non-condensing
Noise	<65 dB(A) @ 1 m.
Locations	Level Surface, No direct heat, Light ≤ 5000 lux

Optical Specifications

	Set 1 (Green Channel)	Set 2 (Orange Channel)	Set 3 (Yellow Channel)	Set 4 (Red Channel)
Wavelength				
Excitation	460 - 480 nm	575 - 597 nm	525 - 535 nm	625 - 635 nm
Emission	505 - 515 nm	610 - 630 nm	550 - 560 nm	655 - 675 nm

Maximum optical crosstalk ≤ 0,5 %

- Set 1: Fluorescent dyes detected in this channel include: FAM
- Set 2: Fluorescent dyes detected in this channel include: ROX, Cal Fluor Red 610
- Set 3: Fluorescent dyes detected in this channel include: Cal Fluor Orange 560
- Set 4: Fluorescent dyes detected in this channel include: Quasar 670

BD—YOUR TRUSTED PARTNER IN INNOVATIVE MOLECULAR SOLUTIONS

BD is committed to establishing new, fully automated diagnostic tools with a broad menu to keep your lab ahead of the evolving landscape of infectious disease screening. We partner with you to deliver comprehensive and innovative solutions that may improve clinical outcomes through efficient workflow. Our aim is to develop new molecular diagnostics that will benefit your clinical staff and reduce healthcare expenses by reducing time and resource intensive procedures while increasing the accuracy of diagnostic testing.

Ready to see **a real difference?**
Contact your BD Diagnostics Account Executive today



BD Diagnostics
7 Loveton Circle
Sparks, MD 21152-0999
800.638.8663
www.bd.com/ds